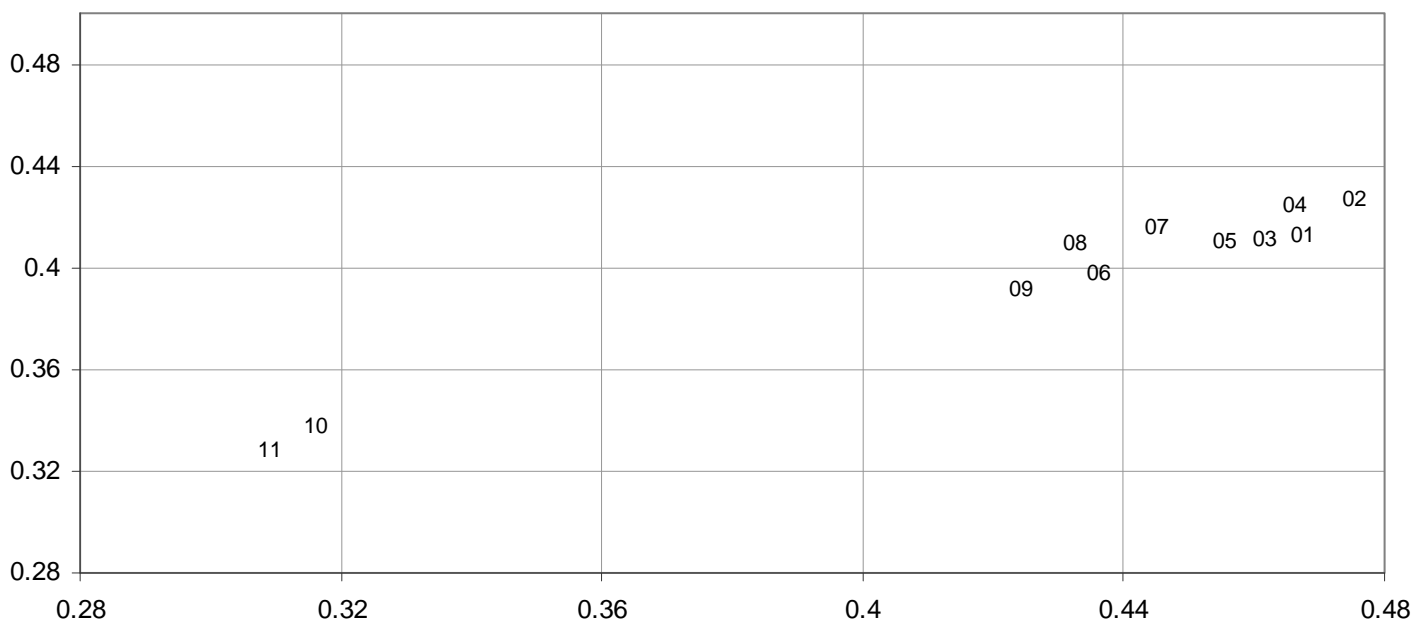


VALUE Flex Eco VFEG1

Binning Information

- FineWhite Binning within each module (4 step MacAdam ellipse)
- Different production codes to ensure narrow binning
- Table below: Centered chromaticity coordinates of each production code
- Chart below: Visual mapping of production codes

-
- FineWhite Binning innerhalb jeden Moduls (4 stufige MacAdam Ellipse)
 - Einteilung in Produktionschargen zur Sicherung des engen Binnings
 - Tabelle unten: Produktionscodes & Zentrierte Farbwerte je Produktionscharge
 - Diagramm unten: Visualisierung & Verortung der Farbortkoordinaten



Product Description	EAN	Color / CCT	Ref. in chart	BIN	Production Code	Centered X	Centered Y	Centered CCT
VFEG1-FLX-300-827-10000-DC	4052899085176	2700K	1		AA621820055	0.4674	0.4125	2613
			2		AA621840055	0.4755	0.4265	2613
			3		AA621810055	0.4615	0.4111	2681
			4		AA621830055	0.4662	0.4243	2717
			5		AA621800055	0.4556	0.4097	2754
VFEG1-FLX-300-830-10000-DC	4052899085275	3000K	6		AA621860055	0.4362	0.3977	2960
			7		AA621880055	0.4451	0.4158	2960
			8		AA621870055	0.4325	0.4088	3114
			9		AA621850055	0.4243	0.3910	3115
VFEG1-FLX-300-865-10000-DC	4052899085350	6500K	10		AA621900055	0.3162	0.3373	6269
			11		AA621890055	0.3090	0.3275	6721

Due to the special conditions of manufacturing processes of LED, the typical data of technical parameters can only reflect statistical figures and do not necessarily correspond to the actual parameters of each single product which could differ from the typical data.