

Light is OSRAM



WIDE TRACK System

Wide Track 30°

FX-QMW-G1-TK30D46H27-300



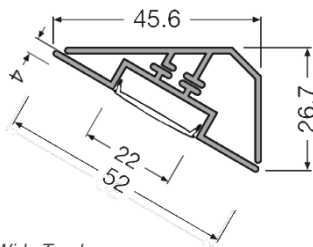
Features & Benefits

Perfect balance between design and functional lighting. Thanks to the 30° shape, this Wide Track is the best way to provide the adequate illuminance to worktops and closets and give the right light accent to shelves and furniture.

Application

- Closets, Worktops, Cabinets Lighting
- Architectural Integration
- Cove lighting

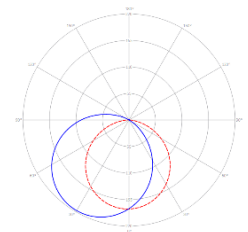
Dimension & Available Covers



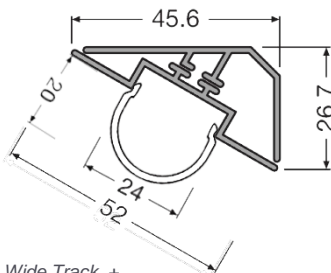
Wide Track +
Wide cover flat frosted FX-QMW-G1-CFDB-300



Wide track + Wide cover flat frosted



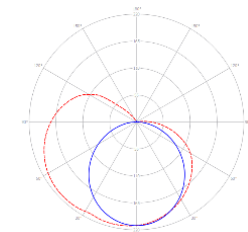
— C0-C180 cd/1000lm
— C90-C270
Wide cover flat frosted



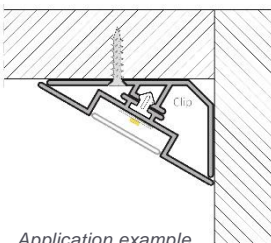
Wide Track +
Wide cover round frosted matte
FX-QMW-G1-CRD-300



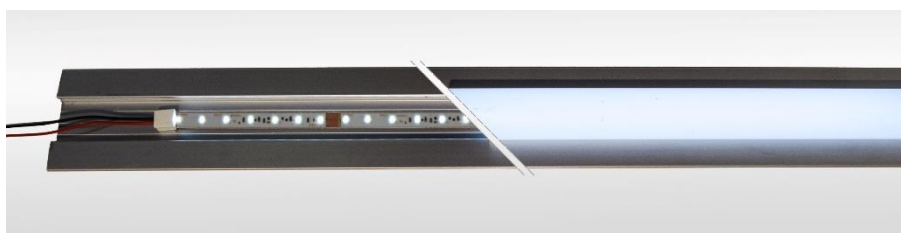
Wide track + Wide cover round frosted matte



— C0-C180 cd/1000lm
— C90-C270
Wide cover round frosted matte



Application example



Wide track and strip LF1200 with and without wide cover round frosted matte

Electrical & Output data

TRACK & LED STRIP COMPATIBILITY ¹										
LED Strip WHITE				LF200	LF06A	LF800S	LF1200	LF2000	LF 3000	LF 4000
Color Temperature				Luminous Flux (lm/m) ²						
	820	2000 K	White	-	-	-	950	1567	2375	-
	824	2400 K	White	-	361	760	1140	1900	2850	-
	827	2700 K	White	190	370	760	1140	1900	2850	3562
	830	3000 K	White	190	370	760	1140	1900	2850	3562
	840	4000 K	White	190	403	807	1140	1900	2850	3657
	850	5000 K	White	-	403	807	1140	1900	2850	3657
	865	6500 K	White	190	403	807	1140	1900	2850	3657
	CRI 90 927	2700 K	White	-	-	-	1045	1710	2295	-
	CRI 90 930	3000 K	White	-	-	-	1140	1900	2850	-
	CRI 90 940	4000 K	White	-	-	-	1140	1900	2850	-

LED Strip SPECIAL WHITE													
				LF1200 TW	LF1200 SW	LF1200 MWR	LF1200 MW	LF1200 VW	LF2000 SW	LF2000 MWR	LF2000 MW	LF2000 VW	LF 3000 SW
Color Temperature				Luminous Flux (lm/m) ²									
	830	3000 K	White	-	1140	-	-	1092	1900	-	-	1900	2850
	840	4000 K	White	-	1140	-	-	1140	1900	-	-	1900	2850
	852	5200 K	White	-	-	-	1140	-	-	-	1900	-	-
	853	5300 K	White	-	-	1045	-	-	-	1377	-	-	-
	TW	2700-6500 K	Dynamic White	1140	-	-	-	-	-	-	-	1900	-

LED Strip COLOR				LF200M	LF200C	LF05A2	LF05CA2	LF700RGBW	LF71300RGBW
Color Temperature				Luminous Flux (lm/m) ²					
	R	625	Red	133	-	114	-	-	-
	G	525	Green	149	-	171	-	-	-
	B	467	Blue	-	-	76	-	-	-
	B	470	Blue	46	-	-	-	-	-
	Y	587	Yellow	133	-	104	-	-	-
	O	602	Orange	-	-	123	-	-	-
	RGB	RGB	RGB	-	198	-	446	-	-
	RGBW	RGBW	RGBW	-	-	-	-	662*	1228*

*Both channels RGB and White on

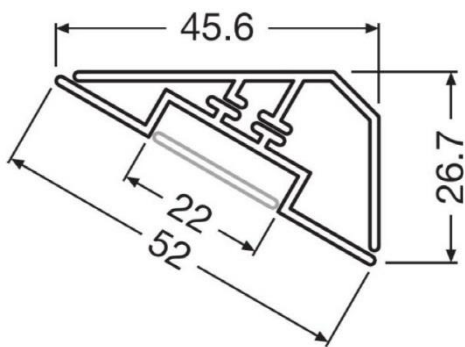
TRACK & LED STRIP IP67 COMPATIBILITY (combination possible only without cover) ¹										
LED Strip WHITE IP67				LF06E-P	LF06A-P	LFP800S				
Color Temperature				Luminous Flux (lm/m) ²						
	827	2700 K	White	-	380	-				
	830	3000 K	White	180	370	817				
	840	4000 K	White	190	370	817				
	856	5600 K	White	-	-	769				
	870	7000 K	White	-	399	-				
	880	7600 K	White	180	-	769				

LED Strip COLOR IP67				LFP200M	LF05A-P	LFP200C	LF05CA-P
Color Temperature				Luminous Flux (lm/m) ²			
	R	625	Red	133	-	-	-
	G	522	Green	149	-	-	-
	B	467	Blue	46	76	-	-
	Y	587	Yellow	133	-	-	-
	RGB	RGB	RGB	-	-	171	413

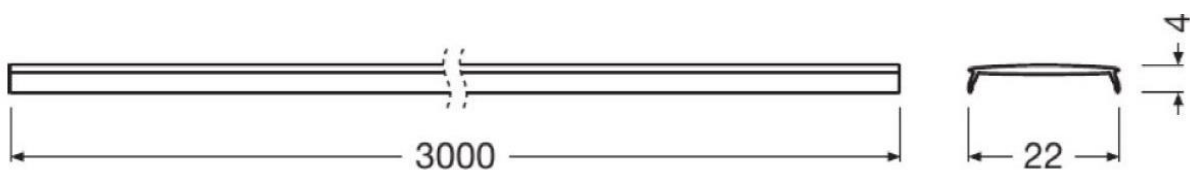
¹ Compatibility tested in surface condition including cover at T amb=25°C. Tc of the LED strip has to be always checked (Tc<Tc max) due to dependence on the specific installation conditions. For further information contact our support service at flex-support@osram.com

² Luminous flux comprehensive of the track's efficiency without cover (Light Output Ratio 95%).
Note: -40% luminous flux with cover flat frosted and -35% with cover round frosted matte.

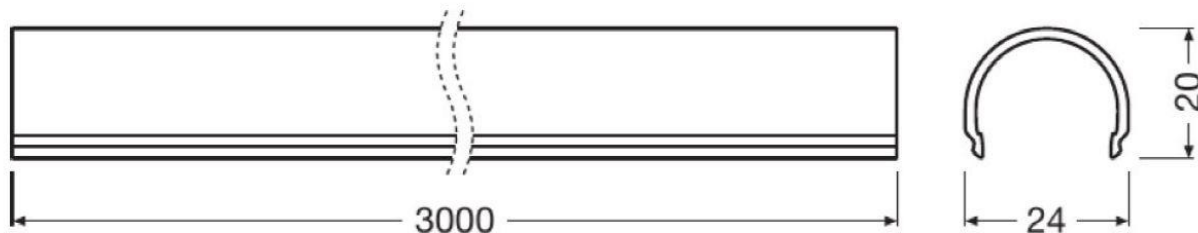
Technical drawings



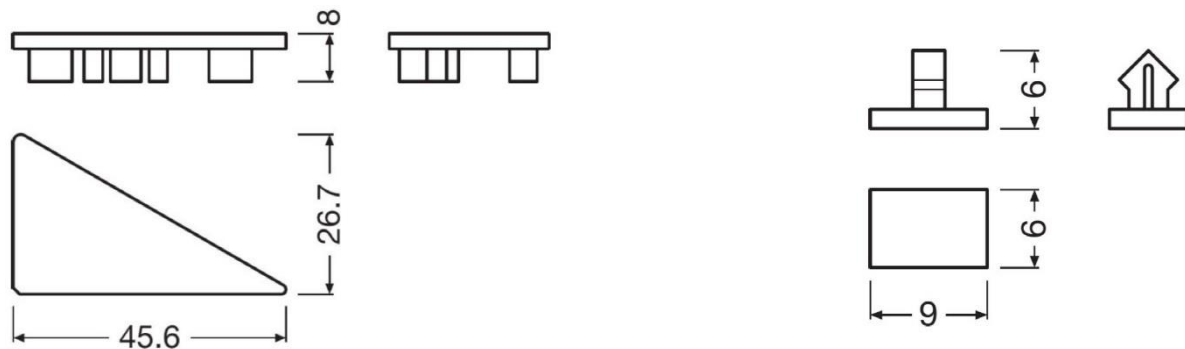
Wide Track
 FX-QMW-G1-TK30D46H27-300
 Order code 4052899448827



Wide cover flat frosted
 FX-QMW-G1-CFDB-300
 Order code 4052899447806



Wide cover round frosted matte
 FX-QMW-G1-CRD-300
 Order code 4052899447035



Plastic Flat end cap grey plain left side
 FX-QMW-G1-EFGP-L-TK30D46H27
 Order code 4052899450059

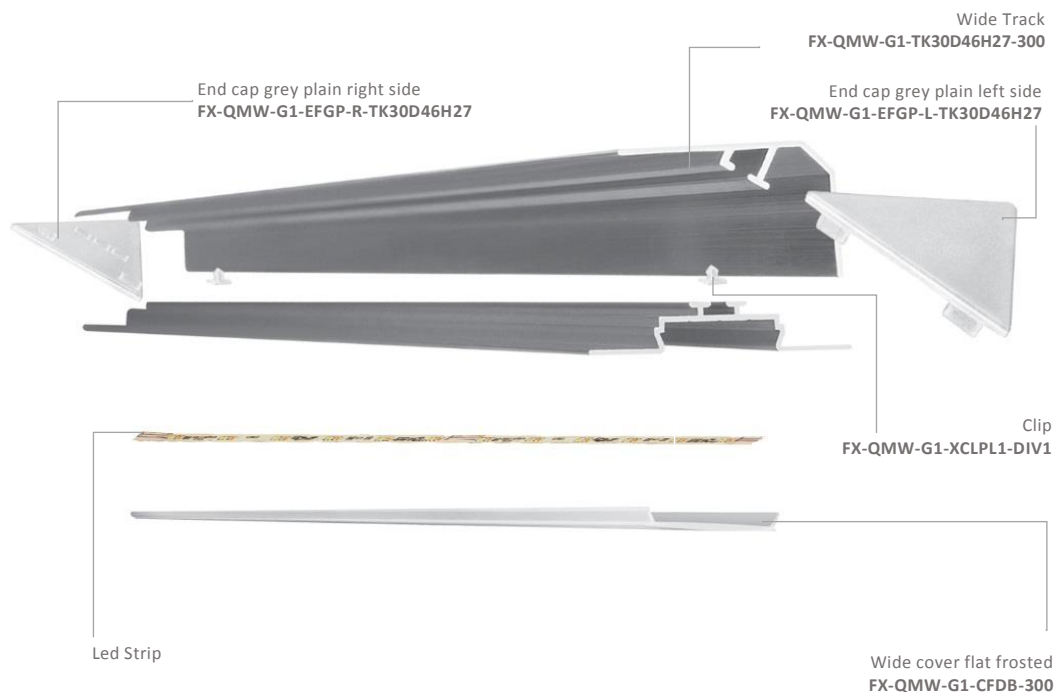
Plastic Flat end cap grey plain right side
 FX-QMW-G1-EFGP-R-TK30D46H27
 Order code 4052899449909

Plastic Clip for combining two parts of the track
 FX-QMW-G1-XCLPL1-DIV1
 Order code 4052899446731

Track System Order Code

Product Code	Description	Product Number (EAN10)	Dimensions (length x width x height)	EAN Package content
FX-QMW-G1-TK30D46H27-300	Wide Track corner 30°	4052899448827	3000 x 45.6 x 26.7 mm	1x WideTrack
FX-QMW-G1-CFDB-300	Wide cover flat frosted	4052899447806	3000 x 11 x 4 mm	1x Cover
FX-QMW-G1-CRD-300	Wide cover round frosted matte	4052899447035	3000 x 24 x 20 mm	1x Cover
FX-QMW-G1-EFGP-L-TK30D46H27	Flat end cap grey plain left side	4052899450059	3000 x 45.6 x 26.7 mm	40x End cap
FX-QMW-G1-EFGP-R-TK30D46H27	Flat end cap grey plain right side	4052899449909	26.7 x 45.6 x 8 mm	40x End cap
FX-QMW-G1-XCLPL1-DIV1	Clip for combining two parts of the track	4052899446731	9 x 6 x 6 mm	40x Clip

Complete System Example



For further information please write to flex-support@osram.com or consult our Flex Configurator at <https://flex.osram.info/en/flex-configurator>

Disclaimer

Subject to change without notice. Errors and omission excepted. Always make sure to use the most recent release.

OSRAM GmbH

Head Office:

Marcel-Breuer-Strasse 6
 80807 Munich, Germany
 Phone +49 89 6213-0
 Fax +49 89 6213-2020
www.osram.com

OSRAM