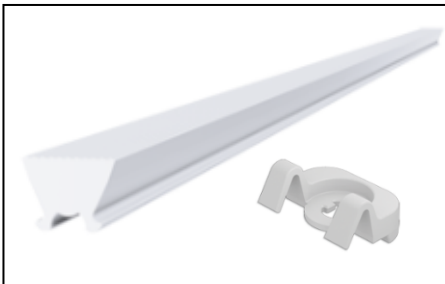


Light is OSRAM

## PrevaLED® Linear optic for 20 mm LE

### Dimension (l x w x h)

- 560 mm x 10.3 mm x 7.9 mm
- 1120 mm x 10.3 mm x 7.9 mm



### Product description

- Linear optic for PrevaLED Linear 20 mm
- Full Width Half Maximum (FWHM) of 40°, 50° and 60°
- 560 mm and 1120 mm length
- Easy and fast mounting by plastic holder
- High transmission: Diffuse and transparent
- Material: PMMA

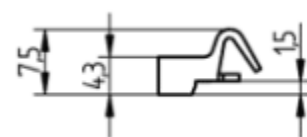
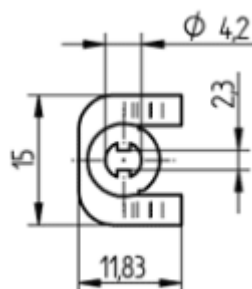
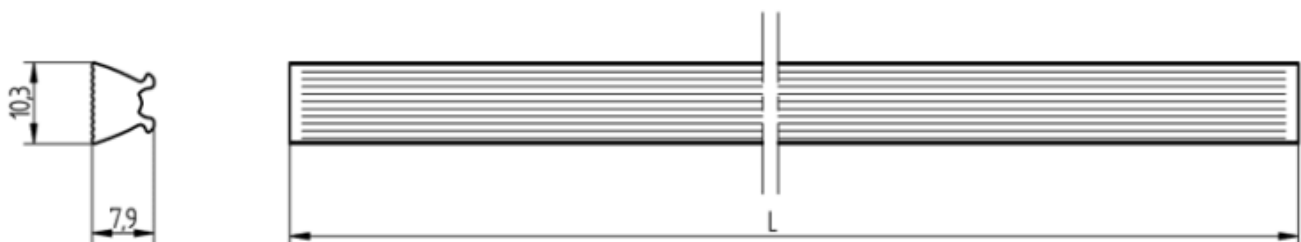
### Application

Warehouse, Retail, Highbay

### Drawings

L= 560 mm

L= 1120 mm

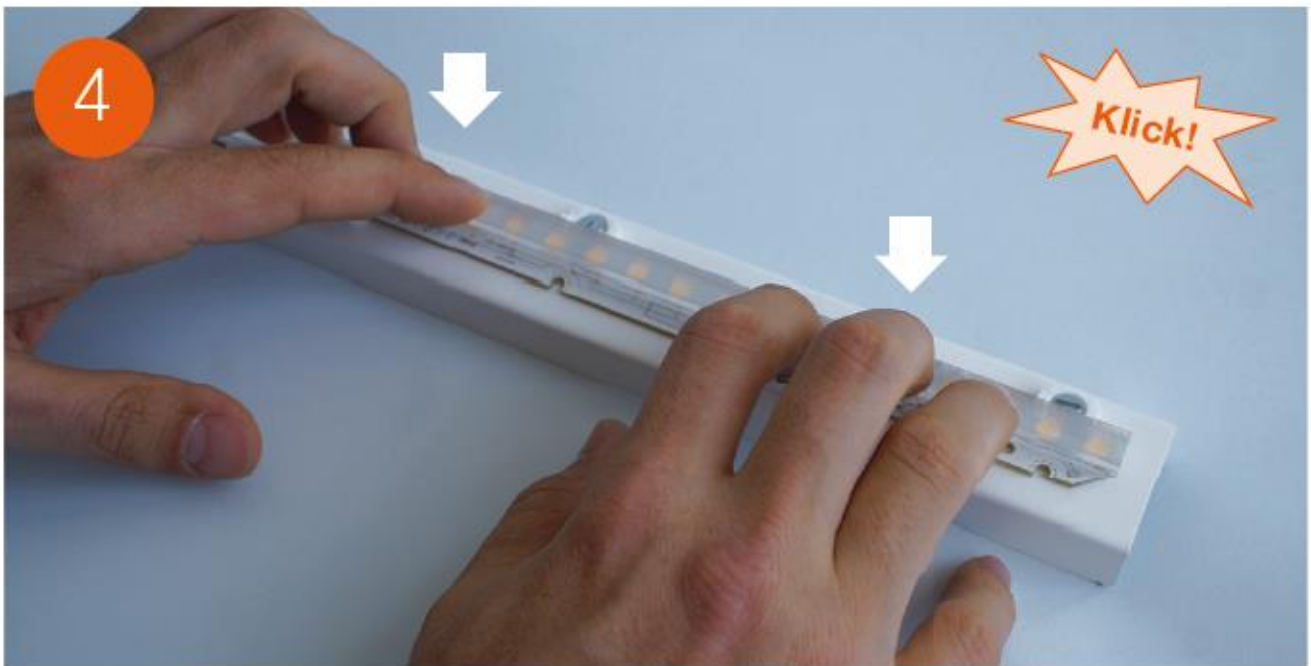


## Optical parameter

Product name	FWHM	Light beam type	Transmission
PL-LIN OPTIC 40 CLR	40°	Narrow	94% - Transparent
PL-LIN OPTIC 50 CLR	50°	Narrow - Medium	93% - Transparent
PL-LIN OPTIC 60 DIFF	60°	Medium	92% - Diffuse

## Installation





LED Module length	Max. amount of plastic holder
560 mm	9 pieces
1120 mm	17 pieces

### Ordering Codes

Product name	EAN 10	Shipping Unit
PL-LIN OPTIC 40 CLR 560X10	4052899 986565	100 x 1
PL-LIN OPTIC 40 CLR 1120X10	4052899 986572	100 x 1
PL-LIN OPTIC 50 CLR 560X10	4052899 986541	100 x 1
PL-LIN OPTIC 50 CLR 1120X10	4052899 986558	100 x 1
PL-LIN OPTIC 60 DIF 560X10	4052899 986527	100 x 1
PL-LIN OPTIC 60 DIF 1120X10	4052899 986534	100 x 1
PL-LIN OPTIC CLIP WT	4052899 986589	MOQ 700 pcs

## Sales and Technical Support

### OSRAM GmbH

Marcel-Breuer-Straße 6  
D-80807 München

[www.osram.com](http://www.osram.com)  
+49 89 6213-0

Sales and technical support is given by the  
local OSRAM subsidiaries.

On our world wide homepage all OSRAM  
subsidiaries are listed with complete address and  
phone numbers.

Note: Typical performance data are subject to change without any further notice, particularly as LED technology evolves.

### OSRAM GmbH

#### Head Office:

Marcel-Breuer-Strasse 6  
80807 Munich, Germany  
Phone +49 89 6213-0  
[www.osram.com](http://www.osram.com)

The OSRAM logo is displayed in a bold, orange, sans-serif font.