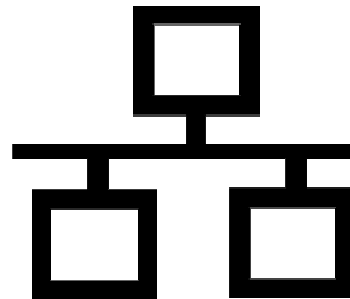


# DALI Professional Controller-4



Software Manual

## Ethernet Connection



# Softwaremanual DALI PROFESSIONAL Controller

## Description of Application Program

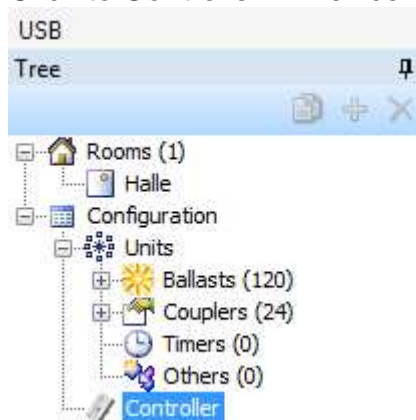
### PC Ethernet Connection to DALI PRO Controller

From software version 1.6.0 / firmware version 3.52 it is possible to use the Ethernet socket of DALI PRO controller. With this the DALI PRO setup process can be made via LAN (direct) or WLAN (router).

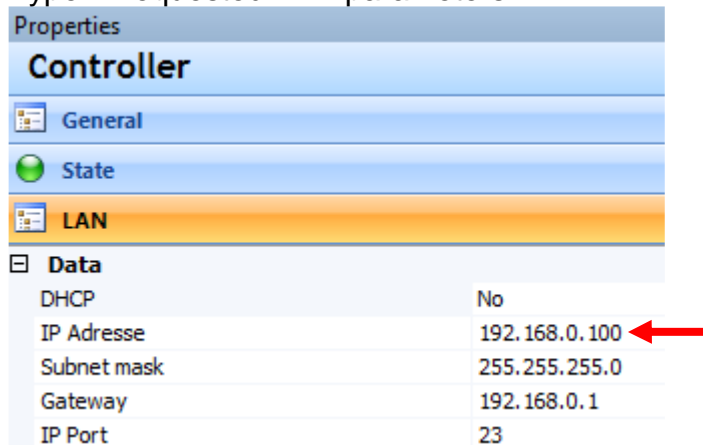
#### IP Parameter setting of Controller with DALI PRO setup software

Controller Parameter have to to be set via USB connection / PC software

Click to Controller in Device Tree



Go to Properties / Controller / General / State / LAN  
Type in requested LAN parameters



- Default controller IP address is 192.168.0.100
- Settings will be stored in the controller immediately after type-in
- Stored values will be kept after power fail

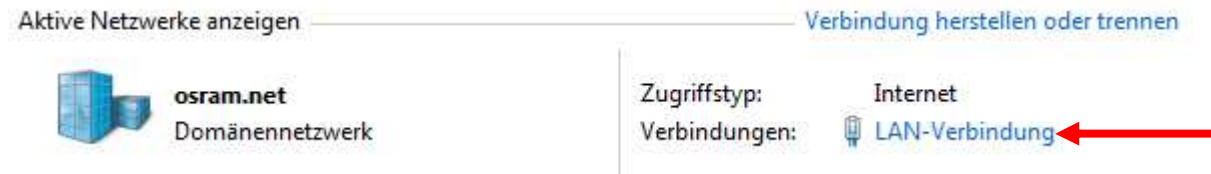
## IP Parameter setting of PC

PC Parameter have to to be set in PC Windows

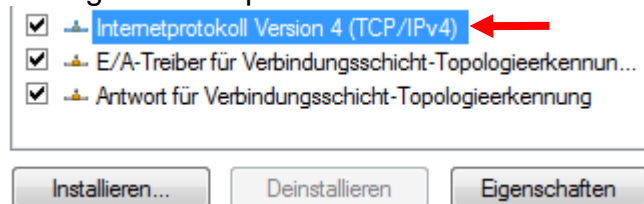
### Go to System Control



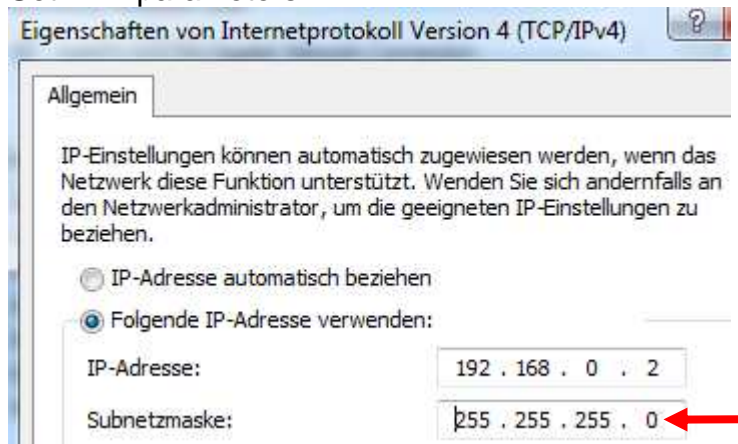
### Configure LAN connection



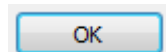
### Change internet protocol



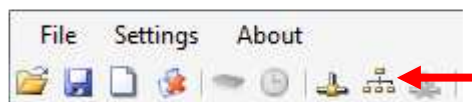
### Set LAN parameters



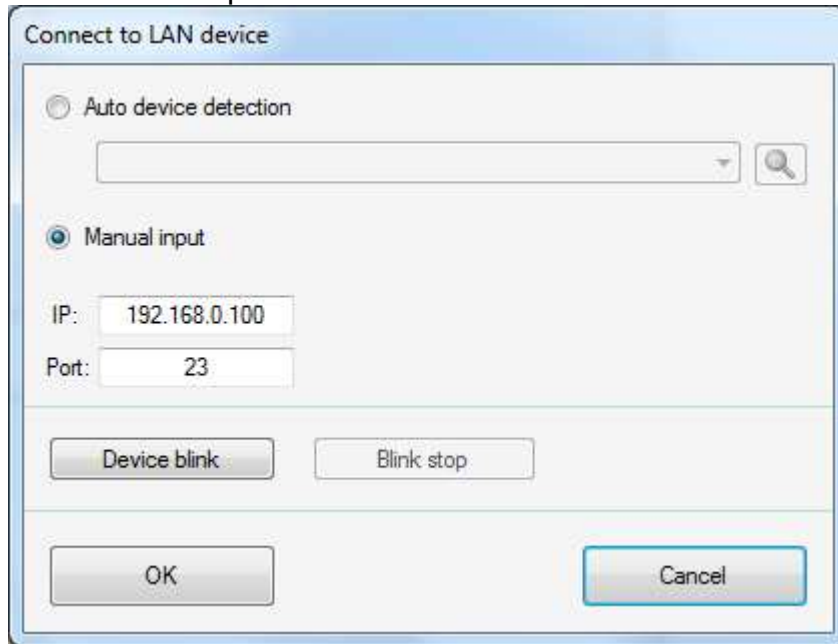
### Confirm



Then click  to connect PC with Controller (direct or via Ethernet Switch / Router)



DALI PRO setup software will show a Ethernet connection window



Search for according controller  
-> Plug&Play LED blinks

Alternatively automatic IP setting can be started with DHCP = Yes in controller settings

If connection is successful this message shows up

**Connected to DALI Professional**

LAN 192.168.0.100

Now complete setup process can be done via Ethernet as done in previous versions via USB.

### Application Hints

- Ethernet connection is a good way to overcome the USB restrictions in distance and stability during a complex setup procedure.
- Do not use a Ethernet connection via company LAN network. In most cases the firewall will block the controller due to missing authorisation.
- If there is no experience with IP technology LAN, WLAN, stay with USB connection or ask your IT department for support. We are not in the position to know the details of your network.